



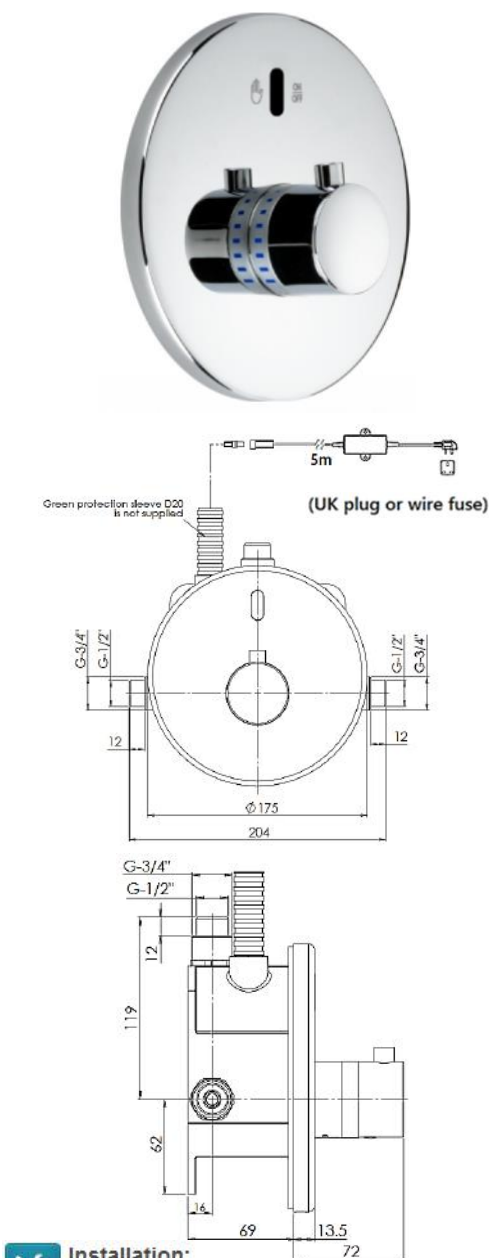
Acme Sanitary Ware Co Ltd

Acme Building, 22-28 Nanking Street, Kowloon, Hong Kong
 Tel: 2388 7171 Fax: 2710 8012
 E-mail: acme@acmesanitary.com.hk
 Website: www.acmesanitaryware.com.hk



| | | | | | | |
|----------|--|------|--|-----|-----------|--|
| PROJECT | | REF | | REV | ITEM CODE | |
| LOCATION | | DATE | | | PAGE | |

SANITARY WARE SPECIFICATION SHEET

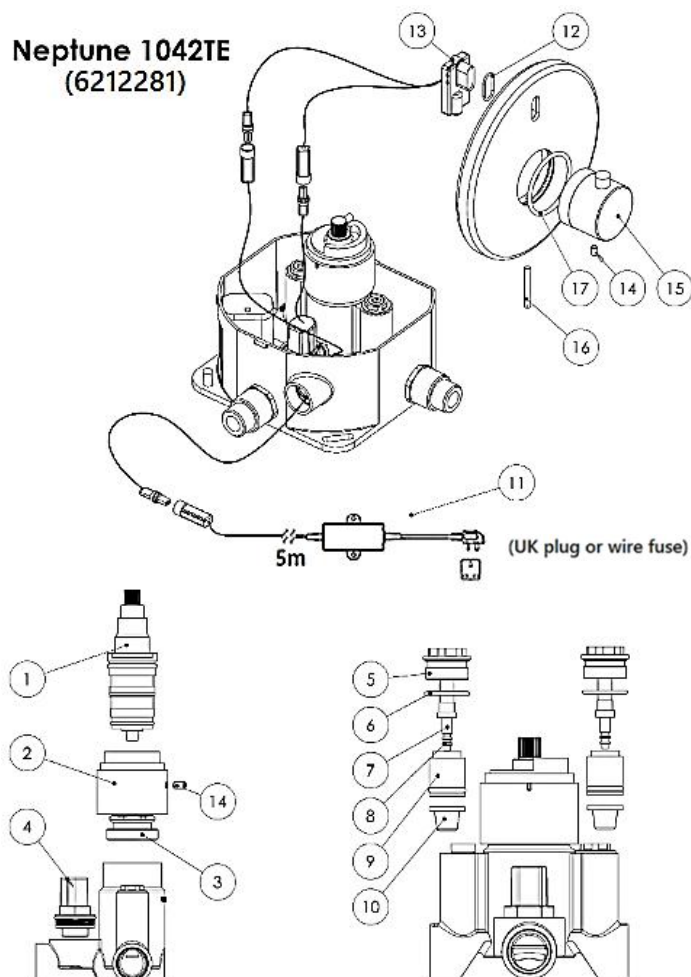
| Item Descriptions | Stern (Israel) "Neptune 1042 T" Touch-free electronic thermostat infrared sensor shower mixer with water temperature adjustment for hot and cold water in AC Supply with 5m wire AC 110-240 Vac 50/60Hz to 9V 0.3A IP68 waterproof switching transformer | <div>Illustration/ Drawing</div>  | | | | | | | | | | | | | | | | | | | | | | | | | | | | | | | | | | | |
|--|---|--|---|----------------|----------|---------|--|--------------|------------------------|-------|---------------------------|--------|------|----------------|---|------------|----------------------|----------------|----------|--------------------|-----------------------------|--|---|-----------------|--------|----------------|--------------------|--|--|--|--|-------------------|--------------|--|--|--|--|
| Model | Neptune 1042 TE | | | | | | | | | | | | | | | | | | | | | | | | | | | | | | | | | | | | |
| Coda Number | 612281 | | | | | | | | | | | | | | | | | | | | | | | | | | | | | | | | | | | | |
| Finish | Chrome Plated | | | | | | | | | | | | | | | | | | | | | | | | | | | | | | | | | | | | |
| Source | Acme Sanitary Ware Co. Ltd Mr. Eric Wong / Mr. Don Yuen | | | | | | | | | | | | | | | | | | | | | | | | | | | | | | | | | | | | |
| Contact Tel/Fax | (852) 2388-7171 / (852) 2710-8012 | | | | | | | | | | | | | | | | | | | | | | | | | | | | | | | | | | | | |
| E-mail | acme@acmesanitary.com.hk | | | | | | | | | | | | | | | | | | | | | | | | | | | | | | | | | | | | |
| Website | www.acmesanitary.com.hk | | | | | | | | | | | | | | | | | | | | | | | | | | | | | | | | | | | | |
| NEPTUNE 1042 TE Ref # 612281 Touch-free electronic shower control. Operated by infrared sensor. With a mixer for water temperature adjustment for hot and cold water. Includes non-return valves, filters and Thermostop at 38°C. All components are located inside the product body for added vandal protection. Powered by a 9V transformer. Adjustable setting by remote control: sensor range, security time, delay in, delay out, on-off and reset to factory settings. | | | | | | | | | | | | | | | | | | | | | | | | | | | | | | | | | | | | | |
| Application: Combines an elegant design with high quality vandal resistant features. Helps washrooms to stay clean and saves water. Ideal for sport facilities and spas. | | | | | | | | | | | | | | | | | | | | | | | | | | | | | | | | | | | | | |
| Use: Touch free electronic shower control. The shower would be activated once the user places their hands in close proximity to the sensor. Water flow will shut off when user places their hands in close proximity to the sensor again or once the factory set flow time of 120 seconds passes. Floe time is adjustable by remote control. | | | | | | | | | | | | | | | | | | | | | | | | | | | | | | | | | | | | | |
| <table><tr><th colspan="6">PRODUCT AT A GLANCE</th></tr><tr><td>Installation</td><td colspan="5">Concealed wall-mounted</td></tr><tr><td>Power Supply</td><td colspan="5"><ul style="list-style-type: none">• 9V battery• 9V transformer</td></tr><tr><td>Operating pressure</td><td colspan="5">0.5-8.0 bar / 7.0-116.0 PSI</td></tr><tr><td>Water supply</td><td colspan="5">Hot and cold water</td></tr><tr><td>Water Temperature</td><td colspan="5">Maximum 70°C</td></tr></table> | | PRODUCT AT A GLANCE | | | | | | Installation | Concealed wall-mounted | | | | | Power Supply | <ul style="list-style-type: none">• 9V battery• 9V transformer | | | | | Operating pressure | 0.5-8.0 bar / 7.0-116.0 PSI | | | | | Water supply | Hot and cold water | | | | | Water Temperature | Maximum 70°C | | | | |
| PRODUCT AT A GLANCE | | | | | | | | | | | | | | | | | | | | | | | | | | | | | | | | | | | | | |
| Installation | Concealed wall-mounted | | | | | | | | | | | | | | | | | | | | | | | | | | | | | | | | | | | | |
| Power Supply | <ul style="list-style-type: none">• 9V battery• 9V transformer | | | | | | | | | | | | | | | | | | | | | | | | | | | | | | | | | | | | |
| Operating pressure | 0.5-8.0 bar / 7.0-116.0 PSI | | | | | | | | | | | | | | | | | | | | | | | | | | | | | | | | | | | | |
| Water supply | Hot and cold water | | | | | | | | | | | | | | | | | | | | | | | | | | | | | | | | | | | | |
| Water Temperature | Maximum 70°C | | | | | | | | | | | | | | | | | | | | | | | | | | | | | | | | | | | | |
| <table><tr><th colspan="4">ORDERING INFORMATION</th><th colspan="2">OPTIONS</th></tr><tr><th>MODEL</th><th>CODE</th><th>POWER</th><th>ADDITIONAL SPECIFICATIONS</th><th>OPTION</th><th>CODE</th></tr><tr><td>NEPTUNE 1042 T</td><td>612280</td><td>9V battery</td><td>Conceal installation</td><td rowspan="2">Remote control</td><td rowspan="2">07100005</td></tr><tr><td></td><td></td><td></td><td>With mixer for water temperature adjustment</td></tr><tr><td>NEPTUNE 1042 TE</td><td>612281</td><td>9V transformer</td><td></td><td></td><td></td></tr></table> | | ORDERING INFORMATION | | | | OPTIONS | | MODEL | CODE | POWER | ADDITIONAL SPECIFICATIONS | OPTION | CODE | NEPTUNE 1042 T | 612280 | 9V battery | Conceal installation | Remote control | 07100005 | | | | With mixer for water temperature adjustment | NEPTUNE 1042 TE | 612281 | 9V transformer | | | | | | | | | | | |
| ORDERING INFORMATION | | | | OPTIONS | | | | | | | | | | | | | | | | | | | | | | | | | | | | | | | | | |
| MODEL | CODE | POWER | ADDITIONAL SPECIFICATIONS | OPTION | CODE | | | | | | | | | | | | | | | | | | | | | | | | | | | | | | | | |
| NEPTUNE 1042 T | 612280 | 9V battery | Conceal installation | Remote control | 07100005 | | | | | | | | | | | | | | | | | | | | | | | | | | | | | | | | |
| | | | With mixer for water temperature adjustment | | | | | | | | | | | | | | | | | | | | | | | | | | | | | | | | | | |
| NEPTUNE 1042 TE | 612281 | 9V transformer | | | | | | | | | | | | | | | | | | | | | | | | | | | | | | | | | | | |

- Installation:**
Wall mounted concealed
- Water supply:**
Hot & Cold (2 inlets)
- Water temperature:**
Max 70 °C
- Operating pressure:**
0.5 – 8.0 bar
- Power source:**
9V Transformer

* All information of the above is for the reference only. No prior notice is made if any changes.



SANITARY WARE SPECIFICATION SHEET



| Quantity | Part Number | Description | Cat. No. |
|----------|-------------|-------------------------------------|-----------------|
| | - | Seals and Screws Kit | 07210134 |
| 2 | 14 | Screw M5x8 | |
| 1 | 16 | Screw M5x40 | |
| 2 | 6 | O-Ring 16x1.5 | |
| 1 | 17 | O-Ring 50.39x3.53 | |
| 2 | 8 | O-Ring 2.5x1.5 | |
| | - | Thermostatic Kit | 07110024 |
| 1 | 1 | Thermostatic Cartridge CA43XB | |
| 1 | 2 | Adapter for Handle | |
| 1 | 3 | Nut | |
| 1 | 14 | Screw M5x8 | |
| 1 | 4 | Solenoid Valve | 07500065 |
| | - | Back check +filter Kit | 07212011 |
| 1 | 5 | Cap | |
| 1 | 6 | O-Ring 16x1.5 | |
| 1 | 7 | Plug M4 | |
| 1 | 8 | O-Ring 2.5x1.5 | |
| 1 | 9 | Valve Checks | |
| 1 | 10 | Conic filter | |
| | - | Thermostatic Handle Kit | 07260023 |
| 1 | 15 | Thermostatic Handle | |
| 1 | 14 | Screw M5x8 | |
| | - | Sensor Kit for Neptune 1042T | 07220226 |
| 1 | 13 | Infrared sensor | |
| 1 | 12 | NBR O-Ring 17.17x1.78 | |
| | 11 | Transformer | TBC |

Note: In order to locate the relevant spare part, please check the corresponding parts and part number in the drawing. Minimum order quantity will be required.

* All information of the above is for the reference only. No prior notice is made if any changes.